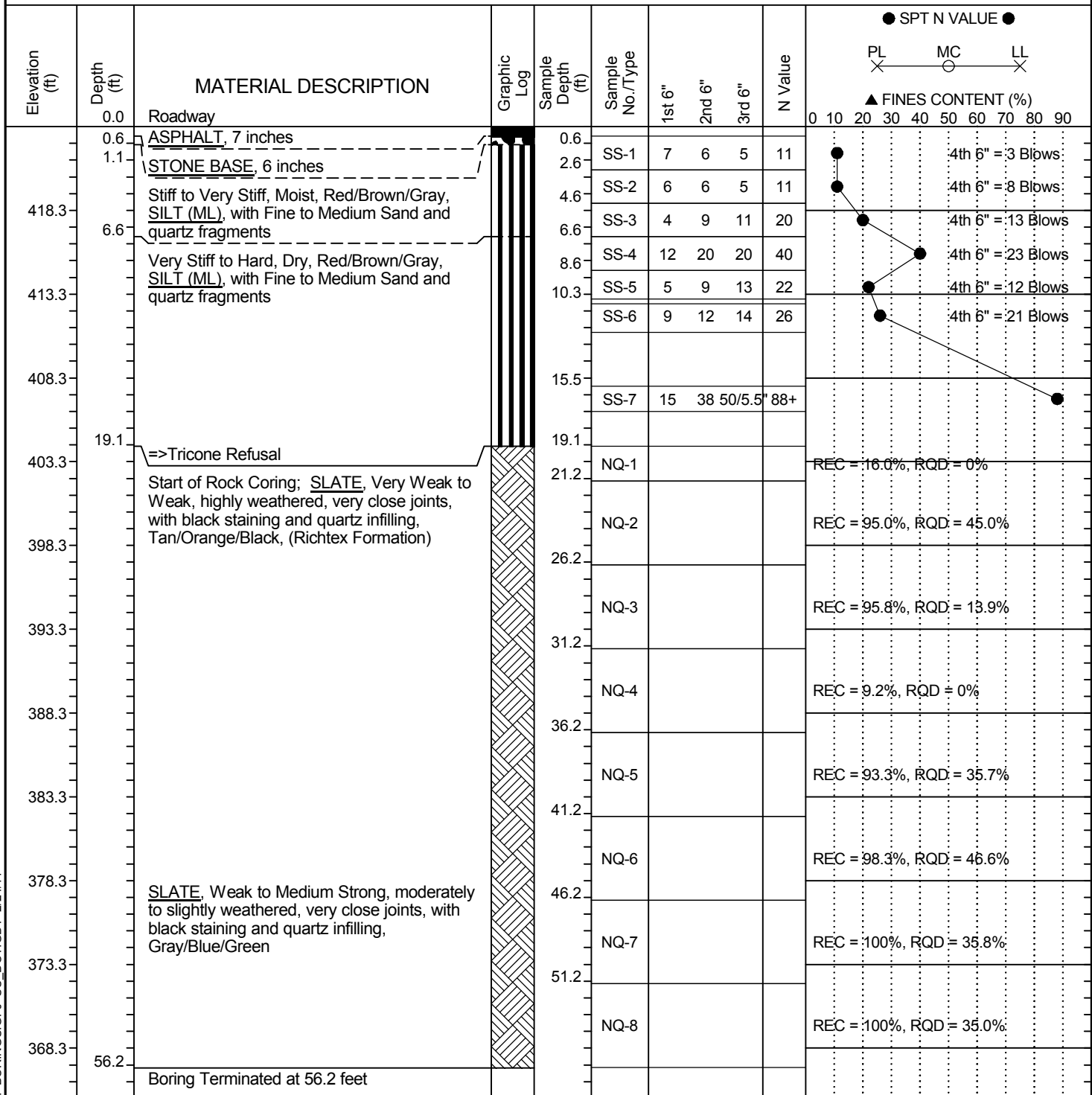


SCDOT Soil Test Boring Log

File No.:	40.038744	Project No. (PIN):	38744 RD01	County:	Richland County	Eng./Geo.:	Wade Myers
Site Description:	S-58 Bridge Replacement over I-26					Route:	S-58
Boring No.:	B-1	Boring Location:	10'-SW	Offset:	8'-L	Alignment:	S-58
Elev.:	423.3 ft	Latitude:	34.122094	Longitude:	81.199649	Date Started:	5/7/2010
Total Depth:	56.2 ft	Soil Depth:	19.1 ft	Core Depth:	37.1 ft	Date Completed:	5/10/2010
Bore Hole Diameter (in):	6.5	Sampler Configuration		Liner Required:	Y (N)	Liner Used:	Y (N)
Drill Machine:	CME 45B	Drill Method:	RW/RC	Hammer Type:	Gravity	Energy Ratio:	73%
Core Size:	NQ	Driller:	Mark Brown	Groundwater:	TOB None	24HR	N/A

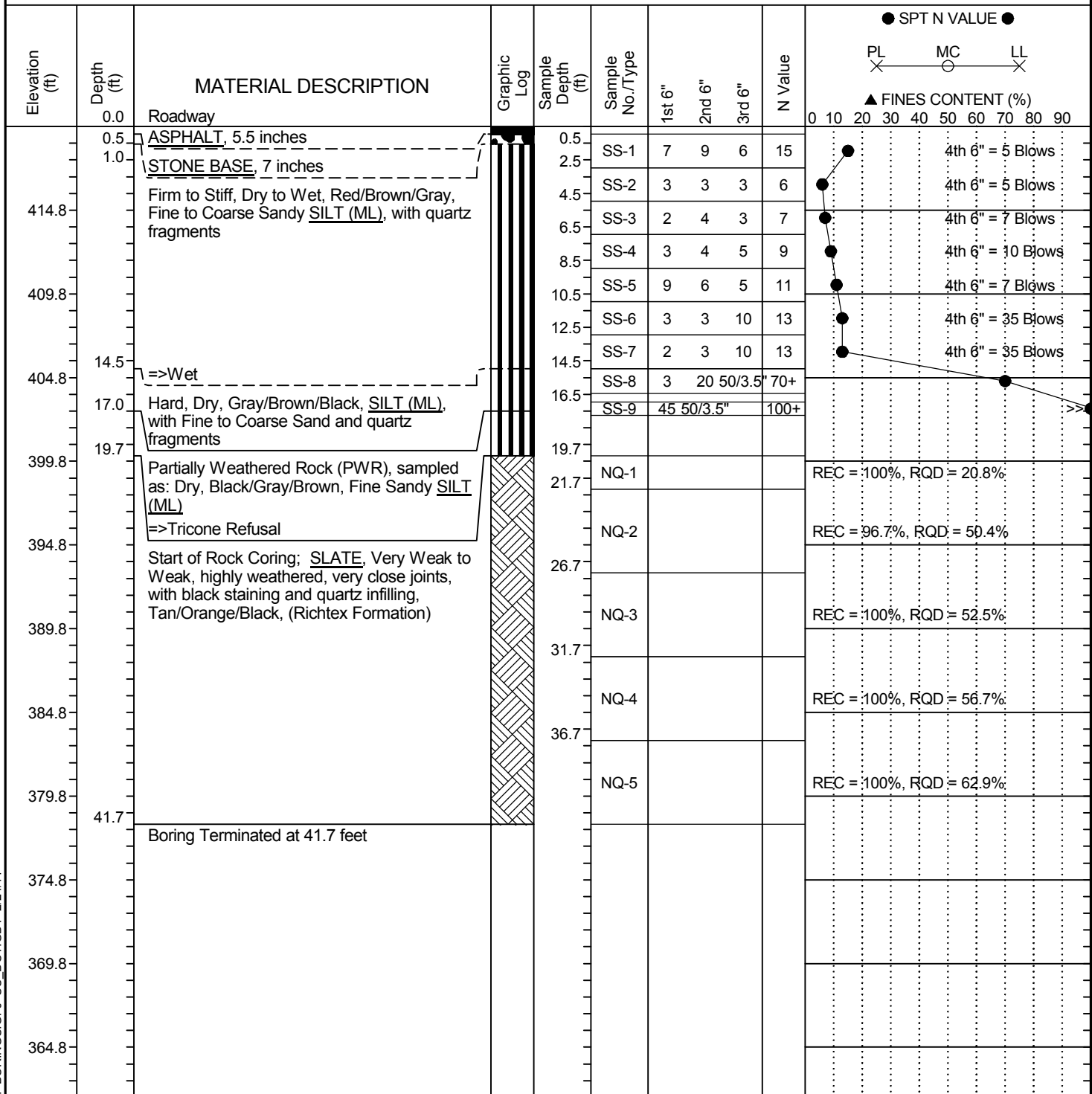


LEGEND

SAMPLER TYPE		DRILLING METHOD	
SS - Split Spoon	NQ - Rock Core, 1-7/8"	HSA - Hollow Stem Auger	RW - Rotary Wash
ST - Shelby Tube	CU - Cuttings	CFA - Continuous Flight Augers	RC - Rock Core
AWG - Rock Core, 1-1/8"	CT - Continuous Tube	DC - Driving Casing	

SCDOT Soil Test Boring Log

File No.:	40.038744	Project No. (PIN):	38744 RD01	County:	Richland County	Eng./Geo.:	Wade Myers
Site Description:	S-58 Bridge Replacement over I-26					Route:	S-58
Boring No.:	B-2	Boring Location:	10'-NE	Offset:	7.25-R	Alignment:	S-58
Elev.:	419.8 ft	Latitude:	33.289682	Longitude:	81.199062	Date Started:	5/11/2010
Total Depth:	41.7 ft	Soil Depth:	19.7 ft	Core Depth:	22 ft	Date Completed:	5/11/2010
Bore Hole Diameter (in):	6.5	Sampler Configuration		Liner Required:	Y (N)	Liner Used:	Y (N)
Drill Machine:	CME 45B	Drill Method:	RW/RC	Hammer Type:	Gravity	Energy Ratio:	73%
Core Size:	NQ	Driller:	Mark Brown	Groundwater:	TOB None	24HR	N/A



LEGEND

SAMPLER TYPE		DRILLING METHOD	
SS - Split Spoon	NQ - Rock Core, 1-7/8"	HSA - Hollow Stem Auger	RW - Rotary Wash
ST - Shelby Tube	CU - Cuttings	CFA - Continuous Flight Augers	RC - Rock Core
AWG - Rock Core, 1-1/8"	CT - Continuous Tube	DC - Driving Casing	